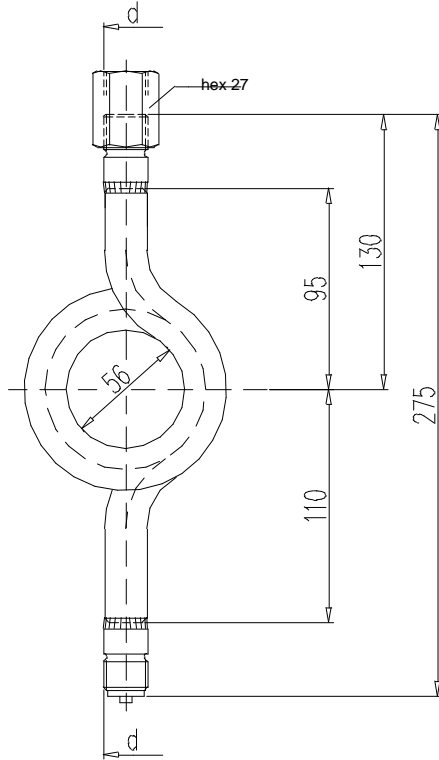


water syphons circular-shaped ('pigtail') for vertical tapping

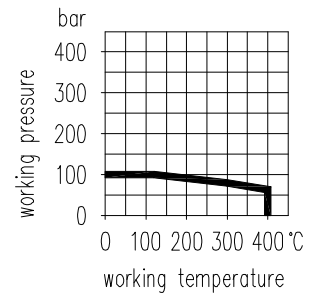
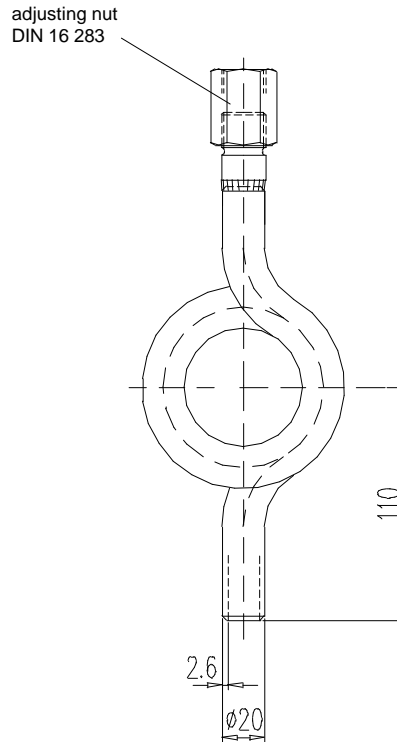
Design C (sim. to DIN 16 282)

with male thread on process side



Design D

with weld end on process side



| Connection thread | Material | Part no. | |
|-------------------|----------|-------------|-------------|
| | | Design C | Design D |
| G 1/2 | steel | S006.08.100 | S006.08.110 |
| | st. st. | S006.08.200 | S006.08.210 |

| Material | | max. working pressure bar | max. working temperature in front of the water syphon °C |
|--------------|---------|------------------------------|--|
| Abbreviation | | | |
| 10 St | St 35.8 | 100 | 120 |
| 20 St | 1.4571 | 80 | 300 |
| | | 63 | 400 |

| Components | Steel | Stainless steel |
|------------------|-----------------------|-----------------|
| | DIN - Material Number | |
| Tube 20 x 2,6 mm | St 35.8 | 1.4571 |
| Male connector | Ck 15 | 1.4571 |

- Surface: steel phosphatized
- Range of application:
For liquids, gas or steam
- Other materials, pressure / temperature ratings and connections (e. g. 1/2 NPT) on request